

Carey Rd between Tillicum Rd and Vernon Ave

March 12, 2019 To March 15, 2019



The data presented here is for information purposes only and should not be considered authoritative for construction, geotechnical, engineering, navigational, legal, or other site-specific uses. The information shared is owned by the Transportation Division of the Engineering Department at the District of Saanich. Accuracy is not guaranteed.

Start Date: 11-Mar-19
 Start Time: 0:02
 Station ID: M0007-01

Location 1: Carey Rd between Tillicum Rd and Vernon Ave
 Note: Tillicum Rd and Vernon Ave

DATE:	March 11, 2019		March 12, 2019		March 13, 2019		March 14, 2019		March 15, 2019		WK AVG		WK AVG	HOURLY
	MON		TUE		WED		THURS		FRI				CH 1+2	%
Time:	NB	SB	NB	SB	NB	SB	NB	SB	NB	SB	NB	SB		
12-1 AM	25	22	27	15	28	15					27	17	44	0.4%
1-2 AM	20	12	17	8	18	4					18	8	26	0.2%
2-3 AM	16	7	12	9	8	8					12	8	20	0.2%
3-4 AM	6	8	6	8	11	13					8	10	17	0.2%
4-5 AM	5	27	9	27	14	30					9	28	37	0.4%
5-6 AM	17	68	26	65	29	64					24	66	90	0.9%
6-7 AM	68	198	70	190	67	204					68	197	266	2.5%
7-8 AM	160	405	171	427	153	450					161	427	589	5.6%
8-9 AM	225	561	234	543	249	569					236	558	794	7.5%
9-10 AM	201	328	223	350	227	334					217	337	554	5.3%
10-11 AM	226	283	209	252	208	286					214	274	488	4.6%
11-12 PM	246	276	285	285	272	297					268	286	554	5.3%
12-1 PM	332	277	291	287	285	283					303	282	585	5.6%
1-2 PM	314	290	326	292	346	274					329	285	614	5.8%
2-3 PM	423	273	388	271	411	287					407	277	684	6.5%
3-4 PM	619	305	666	324	648	344					644	324	969	9.2%
4-5 PM	836	316	852	333	878	311					855	320	1175	11.2%
5-6 PM	751	250	717	271	676	289					715	270	985	9.3%
6-7 PM	400	233	376	239	420	244					399	239	637	6.0%
7-8 PM	254	171	275	168	312	176					280	172	452	4.3%
8-9 PM	206	129	210	153	258	138					225	140	365	3.5%
9-10 PM	186	101	210	86	196	92					197	93	290	2.8%
10-11 PM	114	76	128	66	114	73					119	72	190	1.8%
11-12 AM	81	29	74	35	77	33					77	32	110	1.0%
LANES	5731	4645	5802	4704	5905	4818					5813	4722	10535	100.0%
TOTAL	10376		10506		10723						10540			
	MON		TUE		WED		THURS		FRI		WK AVG			

PEAK HOUR					TOTAL VEHICALS-PEAK PERIODS		2 HOUR PEAK INTERVALS						
MAX. 7 - 9 am PEAK HOUR	794	⇒	7.5%	between 8-9 AM	4681	⇒	6 HR TOTAL	2 HR AM (7 - 9 AM)					
MAX. 7 - 11 am PEAK HOUR	794	⇒	7.5%	between 8-9 AM	3542	⇒	4 HR TOTAL	VEH / HR	VEH / 2HR	2 HR %			
								7-8 AM	589	1382	13.1%		
								8-9 AM	794				
MAX. 11 am - 1 pm PEAK HOUR	585	⇒	5.6%	between 12-1 PM				2 HR NOON (11 - 1 PM)					
MAX. 11 am - 3 pm PEAK HOUR	684	⇒	6.5%	between 2-3 PM				VEH / HR	VEH / 2HR	2 HR %			
								11-12 PM	554	1139	10.8%		
								12-1 PM	585				
MAX. 4 - 6 pm PEAK HOUR	1175	⇒	11.2%	between 4-5 PM				2 HR PM (4 - 6 PM)					
MAX. 3 - 6 pm PEAK HOUR	1175	⇒	11.2%	between 4-5 PM				VEH / HR	VEH / 2HR	2 HR %			
								4-5 PM	1175	2160	20.5%		
								5-6 PM	985				

Carey Rd between Tillicum Rd and Vernon Ave

Northbound

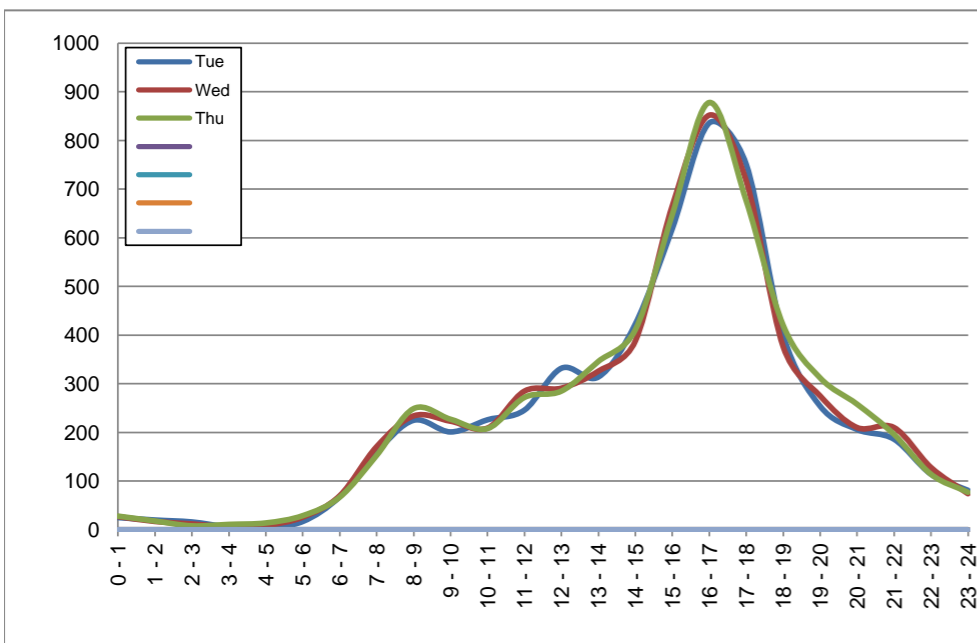
March 12, 2019 to March 14, 2019

Hourly Volumes

Time Period	Tue	Wed	Thu			
	Mar 12	Mar 13	Mar 14			
0 - 1	25	27	28			
1 - 2	20	17	18			
2 - 3	16	12	8			
3 - 4	6	6	11			
4 - 5	5	9	14			
5 - 6	17	26	29			
6 - 7	68	70	67			
7 - 8	160	171	153			
8 - 9	225	234	249			
9 - 10	201	223	227			
10 - 11	226	209	208			
11 - 12	246	285	272			
12 - 13	332	291	285			
13 - 14	314	326	346			
14 - 15	423	388	411			
15 - 16	619	666	648			
16 - 17	836	852	878			
17 - 18	751	717	676			
18 - 19	400	376	420			
19 - 20	254	275	312			
20 - 21	206	210	258			
21 - 22	186	210	196			
22 - 23	114	128	114			
23 - 24	81	74	77			
Day Total	5731	5802	5905			

15-Minute Volumes

Time Start	Tue	Wed	Thu				Time Start	Tue	Wed	Thu			
	Mar 12	Mar 13	Mar 14					Mar 12	Mar 13	Mar 14			
0:00	8	9	12				12:00	88	77	63			
0:15	5	7	6				12:15	70	78	66			
0:30	6	4	4				12:30	80	69	80			
0:45	6	7	6				12:45	94	67	76			
1:00	4	9	5				13:00	74	84	83			
1:15	4	3	6				13:15	76	71	97			
1:30	6	4	4				13:30	86	81	88			
1:45	6	1	3				13:45	78	90	78			
2:00	5	1	2				14:00	103	95	78			
2:15	6	5	3				14:15	104	88	99			
2:30	1	2	1				14:30	93	93	120			
2:45	4	4	2				14:45	123	112	114			
3:00	1	1	0				15:00	132	136	145			
3:15	2	2	5				15:15	128	153	126			
3:30	1	2	4				15:30	160	184	162			
3:45	2	1	2				15:45	199	193	215			
4:00	1	5	3				16:00	212	196	204			
4:15	2	1	5				16:15	209	224	230			
4:30	0	1	3				16:30	231	215	211			
4:45	2	2	3				16:45	184	217	233			
5:00	4	4	6				17:00	208	219	218			
5:15	3	8	11				17:15	221	179	169			
5:30	4	6	7				17:30	154	179	152			
5:45	6	8	5				17:45	168	140	137			
6:00	9	12	11				18:00	133	115	116			
6:15	12	13	10				18:15	92	84	99			
6:30	20	21	21				18:30	95	92	102			
6:45	27	24	25				18:45	80	85	103			
7:00	30	35	29				19:00	83	88	91			
7:15	46	45	36				19:15	58	66	90			
7:30	45	39	42				19:30	48	72	66			
7:45	39	52	46				19:45	65	49	65			
8:00	62	60	63				20:00	58	54	82			
8:15	70	69	69				20:15	48	54	70			
8:30	55	55	55				20:30	46	53	48			
8:45	38	50	62				20:45	54	49	58			
9:00	57	62	68				21:00	54	76	62			
9:15	44	52	51				21:15	49	40	54			
9:30	49	61	45				21:30	51	48	47			
9:45	51	48	63				21:45	32	46	33			
10:00	36	40	55				22:00	45	41	38			
10:15	70	63	49				22:15	30	26	24			
10:30	60	50	50				22:30	19	35	24			
10:45	60	56	54				22:45	20	26	28			
11:00	62	65	70				23:00	37	32	34			
11:15	59	65	61				23:15	16	17	18			
11:30	65	85	62				23:30	15	17	13			
11:45	60	70	79				23:45	13	8	12			



Site notes:

Carey Rd between Tillicum Rd and Vernon Ave

Southbound

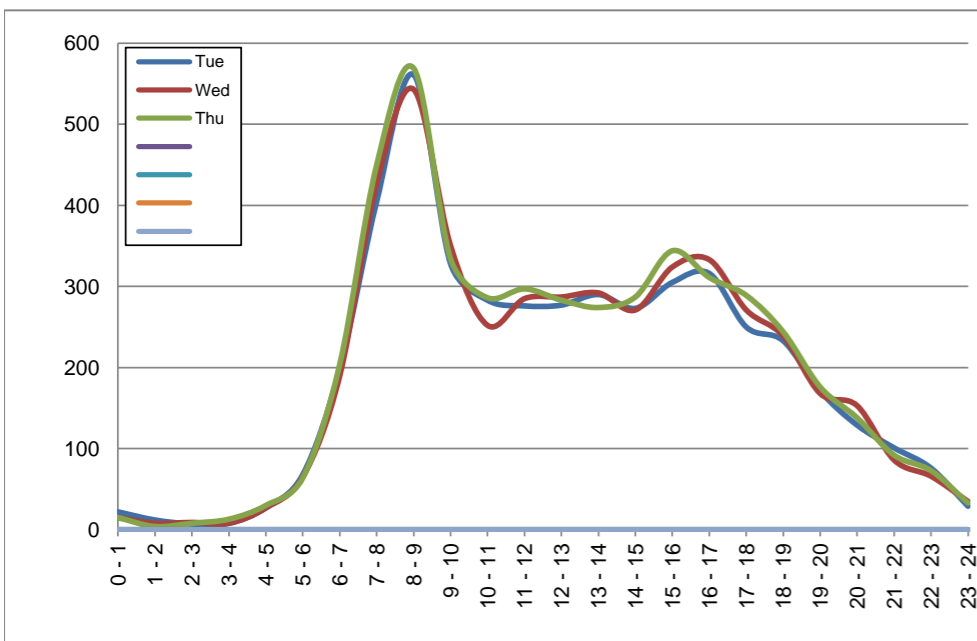
March 12, 2019 to March 14, 2019

Hourly Volumes

Time Period	Tue	Wed	Thu				
	Mar 12	Mar 13	Mar 14				
0 - 1	22	15	15				
1 - 2	12	8	4				
2 - 3	7	9	8				
3 - 4	8	8	13				
4 - 5	27	27	30				
5 - 6	68	65	64				
6 - 7	198	190	204				
7 - 8	405	427	450				
8 - 9	561	543	569				
9 - 10	328	350	334				
10 - 11	283	252	286				
11 - 12	276	285	297				
12 - 13	277	287	283				
13 - 14	290	292	274				
14 - 15	273	271	287				
15 - 16	305	324	344				
16 - 17	316	333	311				
17 - 18	250	271	289				
18 - 19	233	239	244				
19 - 20	171	168	176				
20 - 21	129	153	138				
21 - 22	101	86	92				
22 - 23	76	66	73				
23 - 24	29	35	33				
Day Total	4645	4704	4818				

15-Minute Volumes

Time Start	Tue	Wed	Thu				
	Mar 12	Mar 13	Mar 14				
0:00	6	6	5				
0:15	11	4	2				
0:30	3	3	5				
0:45	2	2	3				
1:00	3	4	2				
1:15	3	1	1				
1:30	4	1	1				
1:45	2	2	0				
2:00	3	2	2				
2:15	3	3	3				
2:30	0	3	1				
2:45	1	1	2				
3:00	0	1	3				
3:15	2	2	4				
3:30	3	1	3				
3:45	3	4	3				
4:00	1	1	3				
4:15	2	2	3				
4:30	11	16	15				
4:45	13	8	9				
5:00	14	8	12				
5:15	15	16	13				
5:30	12	11	15				
5:45	27	30	24				
6:00	22	26	22				
6:15	39	35	48				
6:30	66	62	59				
6:45	71	67	75				
7:00	63	66	68				
7:15	89	81	103				
7:30	114	132	110				
7:45	139	148	169				
8:00	153	148	128				
8:15	143	124	136				
8:30	166	141	157				
8:45	99	130	148				
9:00	79	109	106				
9:15	90	89	64				
9:30	83	70	75				
9:45	76	82	89				
10:00	75	58	72				
10:15	77	66	74				
10:30	73	70	58				
10:45	58	58	82				
11:00	51	78	63				
11:15	71	65	84				
11:30	72	76	81				
11:45	82	66	69				
12:00	62	77	62				
12:15	64	68	71				
12:30	82	73	67				
12:45	69	69	83				
13:00	69	80	82				
13:15	70	60	75				
13:30	74	76	60				
13:45	77	76	57				
14:00	55	59	56				
14:15	76	54	70				
14:30	60	70	76				
14:45	82	88	85				
15:00	81	88	82				
15:15	78	77	89				
15:30	78	70	103				
15:45	68	89	70				
16:00	71	65	78				
16:15	78	74	73				
16:30	85	100	82				
16:45	82	94	78				
17:00	74	70	71				
17:15	62	62	73				
17:30	56	65	76				
17:45	58	74	69				
18:00	59	62	60				
18:15	59	68	52				
18:30	55	53	70				
18:45	60	56	62				
19:00	44	55	48				
19:15	43	37	37				
19:30	42	39	52				
19:45	42	37	39				
20:00	28	41	36				
20:15	48	35	40				
20:30	34	38	35				
20:45	19	39	27				
21:00	30	21	26				
21:15	27	21	28				
21:30	24	21	19				
21:45	20	23	19				
22:00	24	19	25				
22:15	18	22	25				
22:30	19	13	11				
22:45	15	12	12				
23:00	11	14	13				
23:15	5	12	10				
23:30	9	4	3				
23:45	4	5	7				



Site notes:

Vehicle Speed Summary

Saanich Engineering Department

Count Id: **M0007-01**

Filename: [Carey Rd between Tillicum Rd and Vernon Ave-Mar-2019.xlsm](#)

Location: Carey Rd between Tillicum Rd and Vernon Ave

Note: Tillicum Rd and Vernon Ave

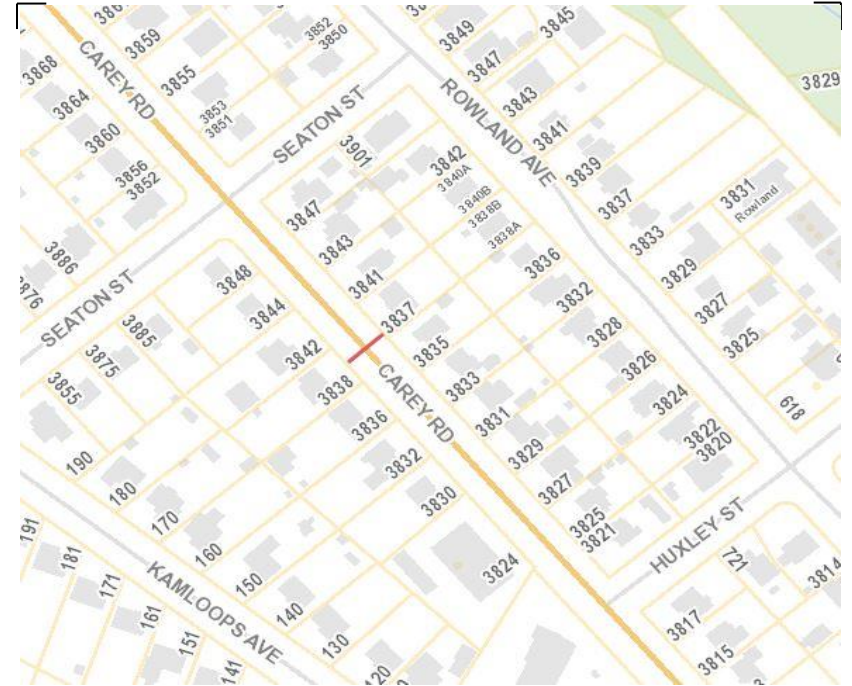
Direction: **North-South**

Dates: **March 12, 2019 To March 15, 2019**

Filtered data

AVG. SPEED	31 mph	50 km/h
50 % SPEED	31 mph	50 km/h
85 % SPEED	35 mph	56 km/h
95 % SPEED	37 mph	60 km/h

Location Map



Carey Rd between Tillicum Rd and Vernon Ave

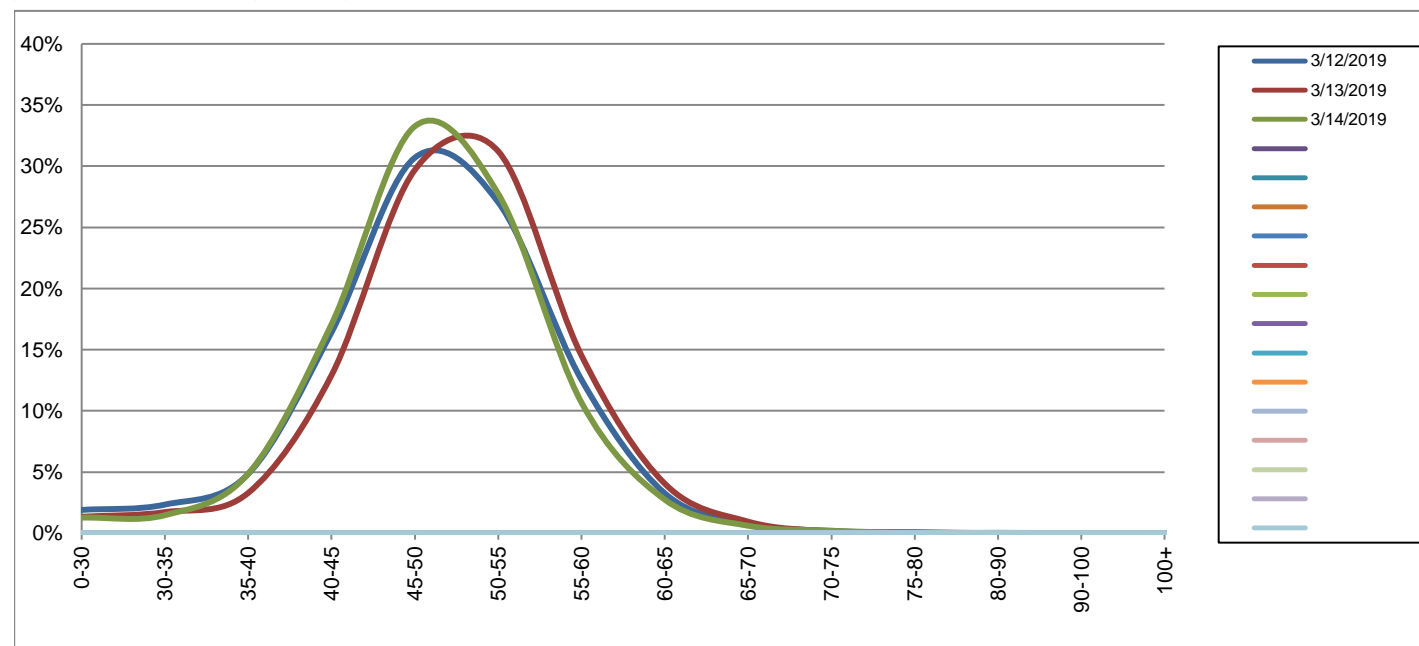
Northbound

March 12, 2019 to March 14, 2019

Daily Speed Bin Percentages															Daily Speed Bin Volumes														Total	Avg.
Bin #	1	2	3	4	5	6	7	8	9	10	11	12	13	14	1	2	3	4	5	6	7	8	9	10	11	12	13	14	Volume	Speed
Bin Speeds	0-30	30-35	35-40	40-45	45-50	50-55	55-60	60-65	65-70	70-75	75-80	80-90	90-100	100+	0-30	30-35	35-40	40-45	45-50	50-55	55-60	60-65	65-70	70-75	75-80	80-90	90-100	100+		
3/12/2019	1.9%	2.3%	4.8%	16.4%	30.7%	27.1%	12.5%	3.3%	0.7%	0.2%	0.0%	0.0%	0.0%	0.0%	109	134	277	941	1759	1551	719	187	42	11	1	0	0	0	5731	49
3/13/2019	1.3%	1.7%	3.3%	12.9%	29.7%	31.2%	14.5%	4.1%	0.9%	0.2%	0.1%	0.0%	0.0%	0.0%	78	100	191	749	1723	1812	843	235	55	9	5	0	1	1	5802	50
3/14/2019	1.3%	1.5%	4.9%	17.1%	33.3%	27.8%	10.7%	2.7%	0.6%	0.2%	0.0%	0.0%	0.0%	0.0%	75	87	287	1008	1964	1639	631	162	36	12	2	2	0	0	5905	49
Total	1.5%	1.8%	4.3%	15.5%	31.2%	28.7%	12.6%	3.3%	0.8%	0.2%	0.0%	0.0%	0.0%	0.0%	262	321	755	2698	5446	5002	2193	584	133	32	8	2	1	1	17438	49

Speed Data Summary

Bin #	1	2	3	4	5	6	7	8	9	10	11	12	13	14	Total
Bin Speeds	0-30	30-35	35-40	40-45	45-50	50-55	55-60	60-65	65-70	70-75	75-80	80-90	90-100	100+	
Survey Total	262	321	755	2698	5446	5002	2193	584	133	32	8	2	1	1	17438
% Total	1.5%	1.8%	4.3%	15.5%	31.2%	28.7%	12.6%	3.3%	0.8%	0.2%	0.0%	0.0%	0.0%	0.0%	100%
Accumulated %	1.5%	3.3%	7.7%	23.1%	54.4%	83.1%	95.6%	99.0%	99.7%	99.9%	100.0%	100.0%	100.0%	100%	
Inverse Accum. %	98.5%	96.7%	92.3%	76.9%	45.6%	16.9%	4.4%	1.0%	0.3%	0.1%	0.0%	0.0%	0.0%	0.0%	
Average Speed	49 KM/H														



Site notes:

Carey Rd between Tillicum Rd and Vernon Ave

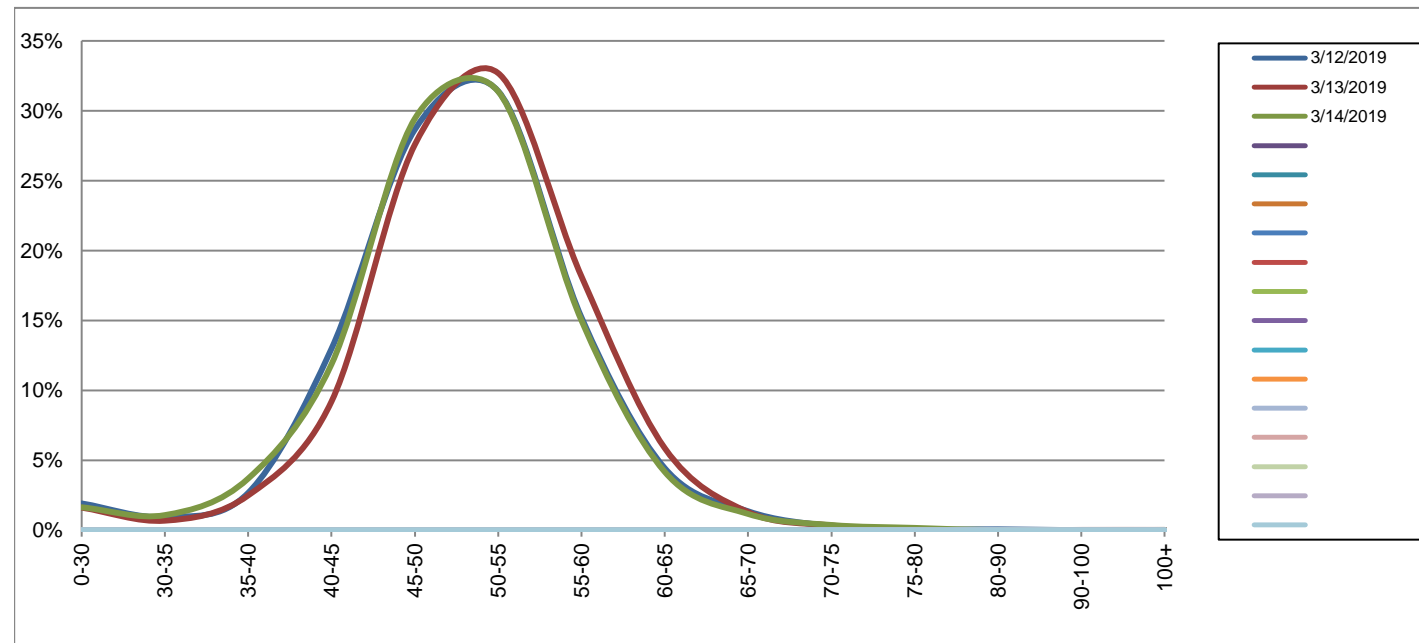
Southbound

March 12, 2019 to March 14, 2019

Daily Speed Bin Percentages															Daily Speed Bin Volumes														Total	Avg.
Bin #	1	2	3	4	5	6	7	8	9	10	11	12	13	14	1	2	3	4	5	6	7	8	9	10	11	12	13	14	Volume	Speed
Bin Speeds	0-30	30-35	35-40	40-45	45-50	50-55	55-60	60-65	65-70	70-75	75-80	80-90	90-100	100+	0-30	30-35	35-40	40-45	45-50	50-55	55-60	60-65	65-70	70-75	75-80	80-90	90-100	100+		
3/12/2019	1.9%	0.9%	2.7%	13.0%	28.7%	31.4%	15.2%	4.4%	1.4%	0.3%	0.0%	0.1%	0.0%	0.0%	89	44	124	603	1331	1459	707	206	63	14	2	3	0	0	4645	50
3/13/2019	1.6%	0.7%	2.5%	9.2%	27.6%	32.7%	18.2%	5.9%	1.3%	0.3%	0.0%	0.0%	0.0%	0.0%	76	32	117	433	1297	1538	854	276	61	16	2	0	1	1	4704	51
3/14/2019	1.6%	1.1%	3.7%	11.9%	29.4%	31.4%	15.0%	4.2%	1.2%	0.4%	0.2%	0.0%	0.0%	0.0%	79	52	178	572	1418	1512	723	201	56	18	8	0	0	1	4818	50
Total	1.7%	0.9%	3.0%	11.4%	28.6%	31.8%	16.1%	4.8%	1.3%	0.3%	0.1%	0.0%	0.0%	0.0%	244	128	419	1608	4046	4509	2284	683	180	48	12	3	1	2	14167	50

Speed Data Summary

Bin #	1	2	3	4	5	6	7	8	9	10	11	12	13	14	Total
Bin Speeds	0-30	30-35	35-40	40-45	45-50	50-55	55-60	60-65	65-70	70-75	75-80	80-90	90-100	100+	
Survey Total	244	128	419	1608	4046	4509	2284	683	180	48	12	3	1	2	14167
% Total	1.7%	0.9%	3.0%	11.4%	28.6%	31.8%	16.1%	4.8%	1.3%	0.3%	0.1%	0.0%	0.0%	0.0%	100%
Accumulated %	1.7%	2.6%	5.6%	16.9%	45.5%	77.3%	93.4%	98.3%	99.5%	99.9%	100.0%	100.0%	100.0%	100%	
Inverse Accum. %	98.3%	97.4%	94.4%	83.1%	54.5%	22.7%	6.6%	1.7%	0.5%	0.1%	0.0%	0.0%	0.0%	0.0%	
Average Speed	50 KM/H														



Site notes:

Carey Rd between Tillicum Rd and Vernon Ave

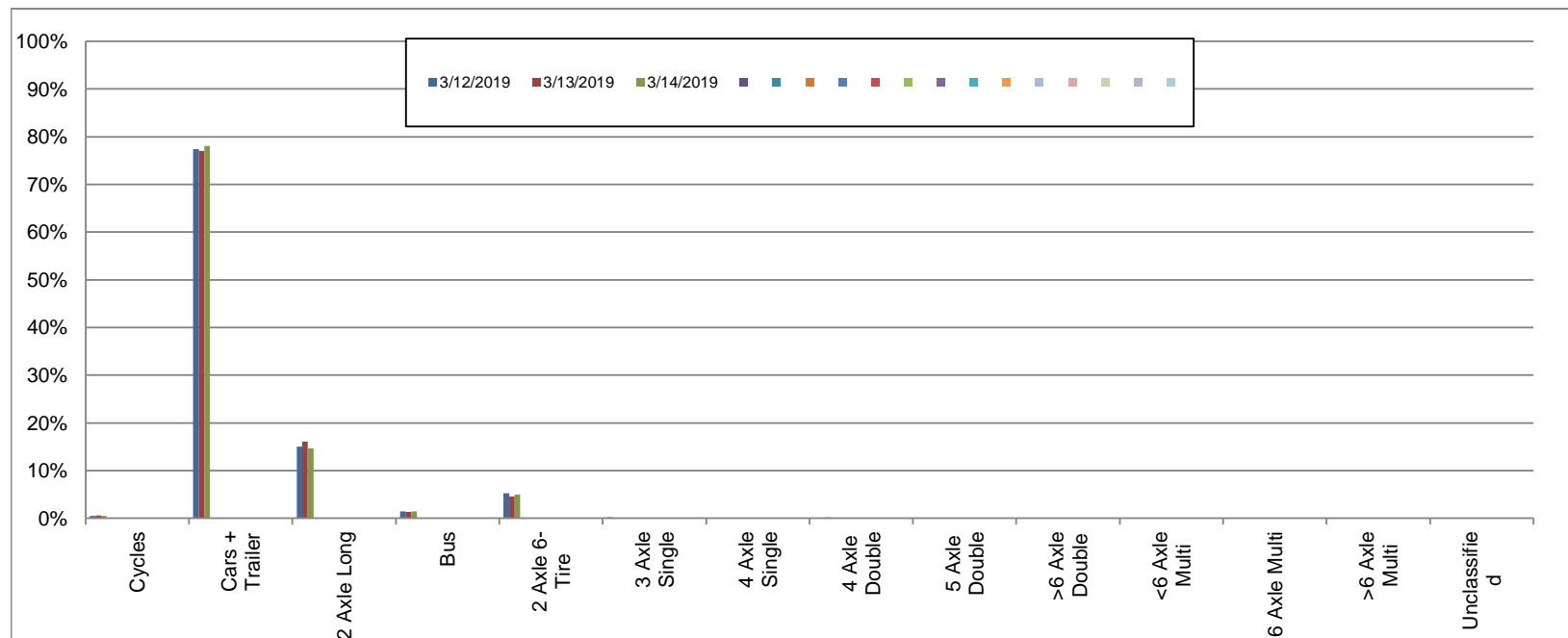
Northbound

March 12, 2019 to March 14, 2019

Daily Class Bin Percentages															Daily Class Bin Volumes											Total Volume			
Bin #	1	2	3	4	5	6	7	8	9	10	11	12	13	14	1	2	3	4	5	6	7	8	9	10	11		12	13	14
Bin Class	Cycles	Cars + Trailer	2 Axle Long	Bus	2 Axle 6-Tire	3 Axle Single	4 Axle Single	4 Axle Double	5 Axle Double	>6 Axle Double	<6 Axle Multi	6 Axle Multi	>6 Axle Multi	Unclassified	Cycles	Cars + Trailer	2 Axle Long	Bus	2 Axle 6-Tire	3 Axle Single	4 Axle Single	4 Axle Double	5 Axle Double	>6 Axle Double	<6 Axle Multi	6 Axle Multi	>6 Axle Multi	Unclassified	
3/12/2019	0.5%	77.4%	15.0%	1.4%	5.2%	0.2%	0.1%	0.1%	0.0%	0.0%	0.0%	0.0%	0.0%	0.1%	27	4434	860	82	300	10	5	7	2	0	0	0	0	4	5731
3/13/2019	0.6%	77.0%	16.0%	1.3%	4.6%	0.2%	0.0%	0.1%	0.0%	0.0%	0.0%	0.0%	0.0%	0.0%	36	4469	930	78	267	9	1	7	1	2	0	0	0	2	5802
3/14/2019	0.5%	78.1%	14.6%	1.4%	5.0%	0.2%	0.0%	0.2%	0.0%	0.0%	0.0%	0.0%	0.0%	0.1%	27	4611	862	85	295	9	0	12	1	0	0	0	0	3	5905
Total	0.5%	77.5%	15.2%	1.4%	4.9%	0.2%	0.0%	0.1%	0.0%	0.0%	0.0%	0.0%	0.0%	0.1%	90	13514	2652	245	862	28	6	26	4	2	0	0	0	9	17438

Class Data Summary

Bin #	1	2	3	4	5	6	7	8	9	10	11	12	13	14	Total Volume
Bin Class	Cycles	Cars + Trailer	2 Axle Long	Bus	2 Axle 6-Tire	3 Axle Single	4 Axle Single	4 Axle Double	5 Axle Double	>6 Axle Double	<6 Axle Multi	6 Axle Multi	>6 Axle Multi	Unclassified	Total Volume
Survey Total	90	13514	2652	245	862	28	6	26	4	2	0	0	0	9	17438
% Total	0.5%	77.5%	15.2%	1.4%	4.9%	0.2%	0.0%	0.1%	0.0%	0.0%	0.0%	0.0%	0.0%	0.1%	100%
Accumulated %	0.5%	78.0%	93.2%	94.6%	99.6%	99.7%	99.8%	99.9%	99.9%	99.9%	99.9%	99.9%	99.9%	100.0%	
Inv. Accum. %	99.5%	22.0%	6.8%	5.4%	0.4%	0.3%	0.2%	0.1%	0.1%	0.1%	0.1%	0.1%	0.1%	0.0%	



Classification Descriptions

Bin #	Bin Description
1	Motorcycles
2	Passenger cars, including those with recreational trailers
3	2-axle pick-ups, vans, and RVs, including those with recreational trailers
4	Buses
5	2-axle, 6-tire single units
6	3-axle single units
7	4-axle single units
8	3-axle or 4-axle double unit
9	5-axle double unit
10	6-, 7-, or 8-axle double unit
11	5-axle multiple unit
12	6-axle multiple unit
13	7-or-more-axle multiple unit
14	Vehicles that could not be classified

Site notes:

Carey Rd between Tillicum Rd and Vernon Ave

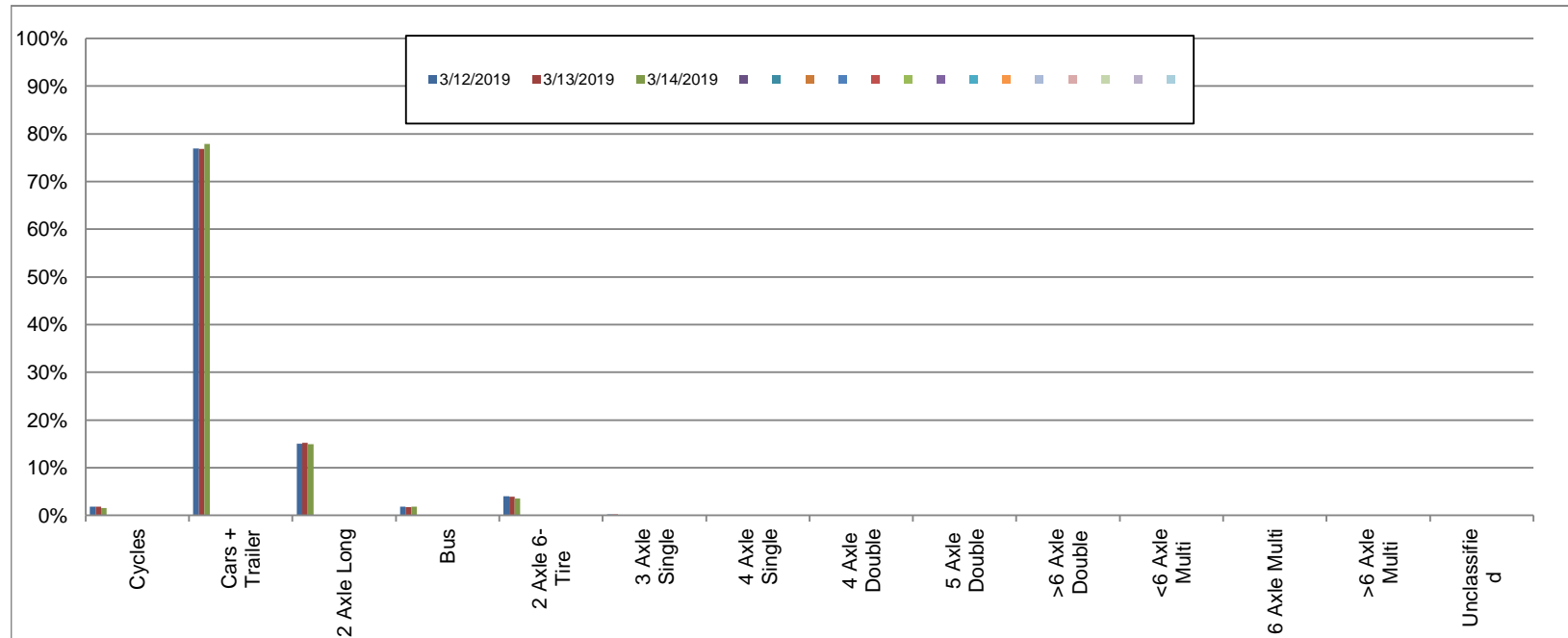
Southbound

March 12, 2019 to March 14, 2019

Daily Class Bin Percentages															Daily Class Bin Volumes											Total Volume				
Bin #	1	2	3	4	5	6	7	8	9	10	11	12	13	14	1	2	3	4	5	6	7	8	9	10	11		12	13	14	
Bin Class	Cycles	Cars + Trailer	2 Axle Long	Bus	2 Axle 6-Tire	3 Axle Single	4 Axle Single	4 Axle Double	5 Axle Double	>6 Axle Double	<6 Axle Multi	6 Axle Multi	>6 Axle Multi	Unclassified	Cycles	Cars + Trailer	2 Axle Long	Bus	2 Axle 6-Tire	3 Axle Single	4 Axle Single	4 Axle Double	5 Axle Double	>6 Axle Double	<6 Axle Multi	6 Axle Multi	>6 Axle Multi	Unclassified		
3/12/2019	1.9%	76.9%	15.0%	1.8%	4.0%	0.2%	0.0%	0.1%	0.0%	0.0%	0.0%	0.0%	0.0%	0.0%	86	3572	696	85	186	11	2	4	0	1	0	0	0	0	2	4645
3/13/2019	1.8%	76.9%	15.2%	1.8%	3.9%	0.2%	0.0%	0.1%	0.1%	0.0%	0.0%	0.0%	0.0%	0.0%	86	3616	717	83	185	10	0	3	3	0	0	0	0	0	1	4704
3/14/2019	1.6%	77.9%	14.9%	1.8%	3.5%	0.1%	0.0%	0.1%	0.0%	0.0%	0.0%	0.0%	0.0%	0.0%	76	3754	717	89	168	6	0	6	1	0	0	0	0	0	1	4818
Total	1.8%	77.2%	15.0%	1.8%	3.8%	0.2%	0.0%	0.1%	0.0%	0.0%	0.0%	0.0%	0.0%	0.0%	248	10942	2130	257	539	27	2	13	4	1	0	0	0	4	14167	

Class Data Summary

Bin #	1	2	3	4	5	6	7	8	9	10	11	12	13	14	Total Volume
Bin Class	Cycles	Cars + Trailer	2 Axle Long	Bus	2 Axle 6-Tire	3 Axle Single	4 Axle Single	4 Axle Double	5 Axle Double	>6 Axle Double	<6 Axle Multi	6 Axle Multi	>6 Axle Multi	Unclassified	Total Volume
Survey Total	248	10942	2130	257	539	27	2	13	4	1	0	0	0	4	14167
% Total	1.8%	77.2%	15.0%	1.8%	3.8%	0.2%	0.0%	0.1%	0.0%	0.0%	0.0%	0.0%	0.0%	0.0%	100%
Accumulated %	1.8%	79.0%	94.0%	95.8%	99.6%	99.8%	99.8%	99.9%	100.0%	100.0%	100.0%	100.0%	100.0%	100.0%	
Inv. Accum. %	98.2%	21.0%	6.0%	4.2%	0.4%	0.2%	0.2%	0.1%	0.0%	0.0%	0.0%	0.0%	0.0%	0.0%	



Classification Descriptions

Bin #	Bin Description
1	Motorcycles
2	Passenger cars, including those with recreational trailers
3	2-axle pick-ups, vans, and RVs, including those with recreational trailers
4	Buses
5	2-axle, 6-tire single units
6	3-axle single units
7	4-axle single units
8	3-axle or 4-axle double unit
9	5-axle double unit
10	6-, 7-, or 8-axle double unit
11	5-axle multiple unit
12	6-axle multiple unit
13	7-or-more-axle multiple unit
14	Vehicles that could not be classified

Site notes: